

Top Stories This Week

- Tata Steel says -UK Unions agreed for modified final salary pension scheme.
- CRISIL shareholders approve buyback of equity shares up to Rs 102 crore at maximum Rs 2,310/share.
- FCI moots proposal to raise Rs 40,000 crore via bonds from LIC.
- L&T -Company set to list infotech arm to raise Rs 1600-1800 crore. May dilute 10-12 percent from IT arm: ET
- Bharti Enterprises, SoftBank Corp and Foxconn enter into pact for renewable energy.
- Reliance Jio (subsidiary of Reliance Industries) gets provisional nod from government for TV content distribution.
- TCS forays into artificial intelligence with its platform Ignio.
- Nissan– Ashok Leyland JV hits a breaking point. Mounting losses, write off and scaling back of investments puts JV at risk: ET
- Adani Group may junk USD 16 billion Australian project. Coal mine plan hurt by delayed clearances, falling prices, green protests: ToI
- Tech Mahindra signs pound 50 million 10-year deal With Circle Heath.

Weekly Indices Change

Index	Close	P. Close	Chg. (%)
SENSEX	27811	27316	1.81
NIFTY	8381	8224	1.91
MIDCAP	10686	10487	1.90
SMLCAP	11124	10942	1.66
METAL	9300	9235	0.70
OIL&GAS	9899	9861	0.39
AUTO	18865	18560	1.64
TECK	6024	6013	0.18
BANKEKX	21058	20485	2.80
IT	10719	10633	0.81
FMCG	7613	7521	1.22
HC	16424	16126	1.85
PSU	7666	7579	1.15
CD	10691	10387	2.93
POWER	2037	1998	1.95
CG	17558	17074	2.83
REALTY	1440	1352	6.51

Global Indices

DOW	17946	18014	-0.38
NASDAQ	5080	5117	-0.72
FTSE	6753	6710	0.64
NIKKEI	20706	20174	2.64
HANGSENG	26663	26760	-0.36

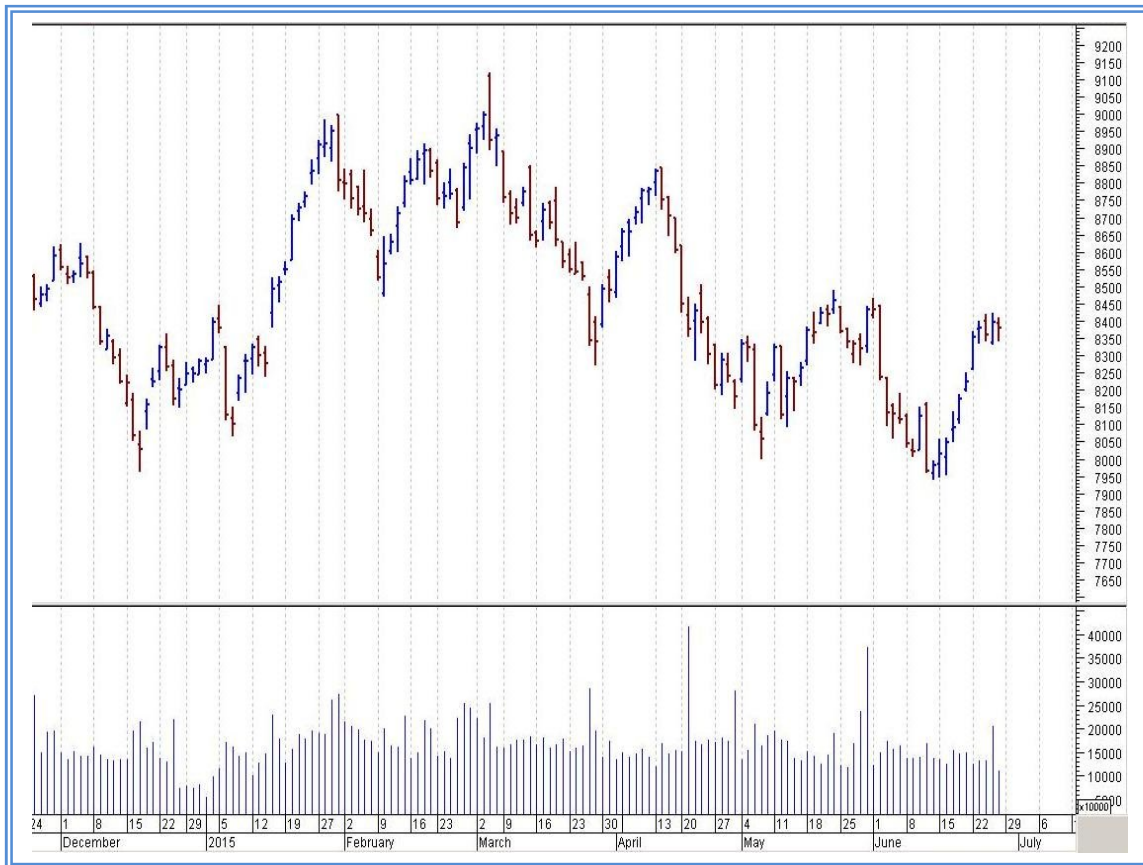
Top Gainers Weekly

Scrip	Price	% Chg
Mastek Limited	208.20	47.29
Indiabulls Real Estate	57.55	37.35
VLS Finance Limited	47.90	36.86
Nitin Spinners	72.90	32.18
Man Industries	91.45	24.59

Top Losers Weekly

Scrip	Price	% Chg
Persistent Systems	610.05	15.32
Essar Oil Ltd.	136.05	13.89
Bajaj Electrical	272.60	9.39
Oberoi Realty	278.70	7.41
KPIT Technologies	93.15	6.90

Nifty Corner



Support & Resistance						
S3	S2	S1	Nifty	R1	R2	R3
8200	8250	8300	8381	8450	8550	8600
Moving Averages						
20DMA		50DMA		100DMA		200DMA
8175		8265		8505		8395

Market Commentary

Key benchmark indices surged in the week ended Friday, 26 June 2015, triggered by speculation that pick-up in sowing of Kharif crops, above-average monsoon rains during the initial part of the June-September southwest monsoon season, data showing higher water storage in reservoirs and a restrained increase in minimum support prices for Kharif crops announced by the government last week will improve the odds for further monetary policy easing from Reserve Bank of India (RBI). The S&P BSE Sensex rose 495.67 points or 1.81% to settle at 27,811.84. The market gained in three out of five trading sessions of the week. For the next week Nifty likely to trade in the range between 8550 - 8600 in the upper side and 8300 - 8250 in the lower side.

Stocks at 52 wk High

Scrip	Cmp
Bajaj Finance	5435.75
Jubilant Food	1856.45
Maruti Suzuki	4069.95
Nilkamal	580.55
RPG Life	179.95

Stocks at 52 wk Low

Scrip	Cmp
Ballarpur Industries	12.65
Nava Bharat Ven	145.25
Raj Television	47.50
Tilaknagar Ind	18.85
Sharon Bio Medi	13.10

FII Activity

Date	Figures in crore
22/06	651.31
23/06	-374.97
24/06	92.57
25/06	280.21
26/06	-203.74
NET	444.38

DII Activity

Date	Figures in crore
22/06	-94.03
23/06	404.20
24/06	13.52
25/06	-8.45
26/06	234.21
NET	549.45

Weekly Stock Idea

Scrip	B/S	Cmp	Tgt
BRITANNIA	B	2743	2795
IRB	B	232	254
TVSMOTORS	B	245	262
FORTIS	B	180	215
SUBEX	B	12	15

Buy on dips & Sell on rise with Stop-loss of 3%

Volume Breakout Stocks

Scrip	Cmp
Mastek	208.20
VLS Finance	47.90
TV18 Broadcast	37.65
India Cements	94.35
PVR	639.80

Week Ahead

MAJOR RESULTS/AGM MEETING THIS WEEK:

29 JUNE: ANDHRABANK, HAVELLS, DABUR, NUCLEUS,

30 JUNE: CENTENKA

02 JULY: HDFCBANK, M&MFIN, SOBHA, ARSHIYA, RSSOFTWARE, LLOYDELENG

03 JULY: ZENSARTECH, INDUSINDBK

VISIT US AT: WWW.INDIRATRADE.COM

Disclaimer

This report is for private circulation within the Indira Group. This report is strictly confidential and for information of the selected recipient only and may not be altered in any way, transmitted to, copied or distributed, in part or in whole, to any other person or to the media or reproduced in any form. This report should not be construed as an offer or solicitation to buy or sell any securities or any interest in securities. It does not constitute a personal recommendation or take into account the particular investment objectives, financial situations, or any such factor. The information, opinions estimates and forecasts contained here have been obtained from, or are based upon, sources we believe to be reliable, but no representation of warranty, express or implied, is made by us to their accuracy or completeness. Opinions expressed are our current opinions as of the date appearing on this material only and are subject to change without notice.